

(I)

Semaî

R A S T K Â R - I N A T I K

Sahibi Meçhul

= 104
Rast

Rastge ti rūp fen di le sey ritdi hūma yî -S A Z -

Rehavi

yî -SAZ- Düş tû o dem ha tî rabir beste reha vi

Nikriz

bes te re ha vi -SAZ- Şu le ge rek nağme i nî

ri ze gi der ken -SAZ- ken

Pengâh

Var dî gö nûl pen cûggo ke e di kara rî rî -SAZ-

Mahur

An da du rup ey le di ma hu ru te ma şa

ya ya rî te ma şa

Nova

Düm de ro lel lâ i lo gös ter di neva yî

ah ne va yî Düm de re lel

lâ i lo gös ter di ne va yî

./...

RAST KÂR - I NATIK
(Devam)

Uşşak



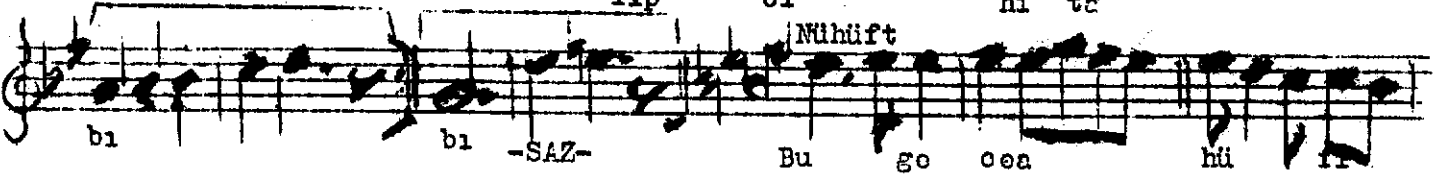
Beyati



Nişabur



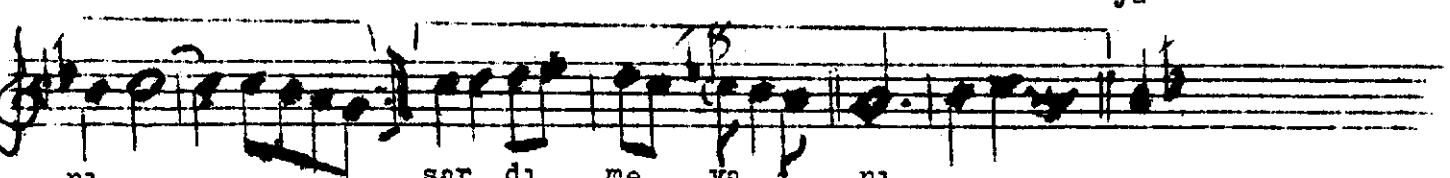
Nihavent



Nihüft



Saba



RAST KAR I NATIK

(Devam)

Çargâh



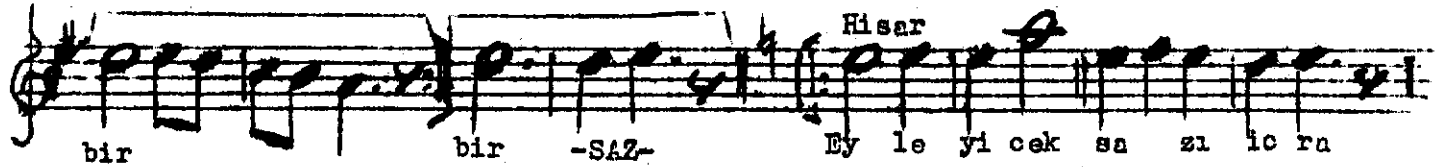
Dügâh



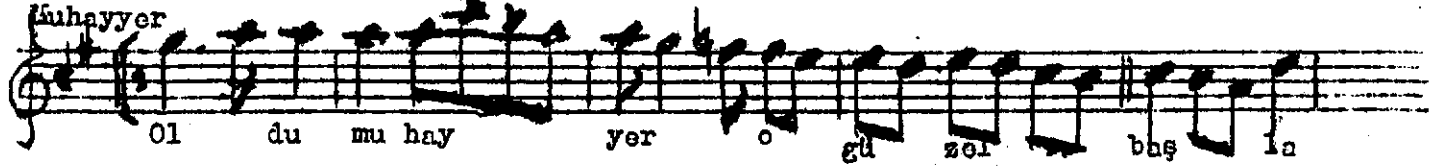
Hüseyni



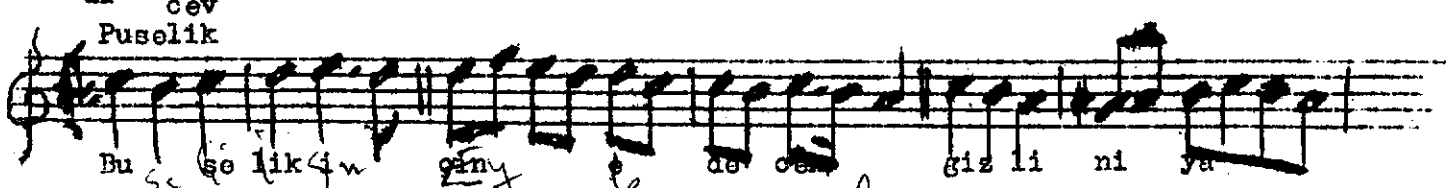
Hisar



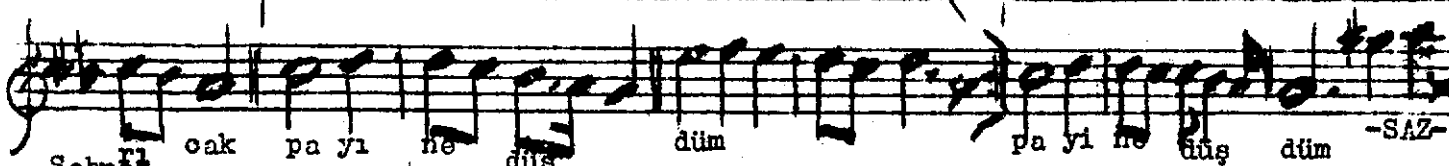
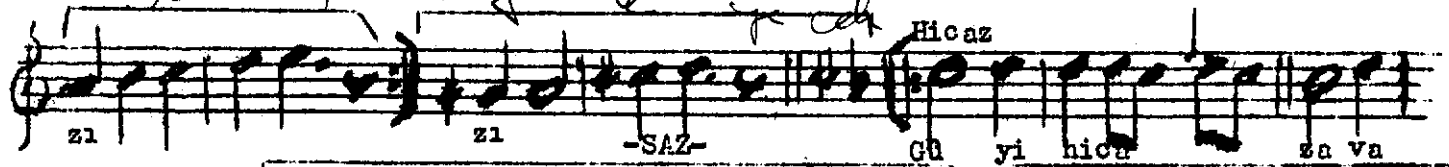
Muhayyer



Pusulik



Hicaz



RAST KÂR I NATIK

(Devam)

Rehatülervah



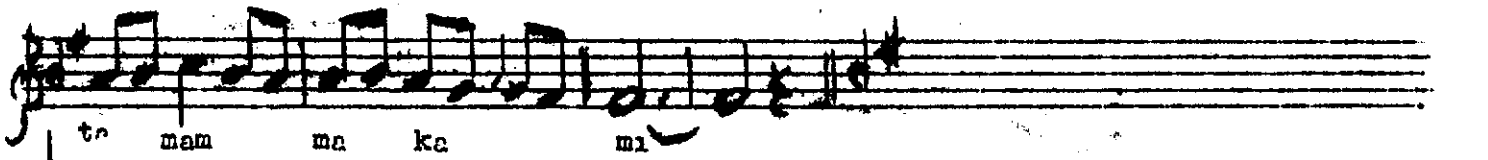
Bestenigâr



Irak



Eviç



♩ = 59 RAST

